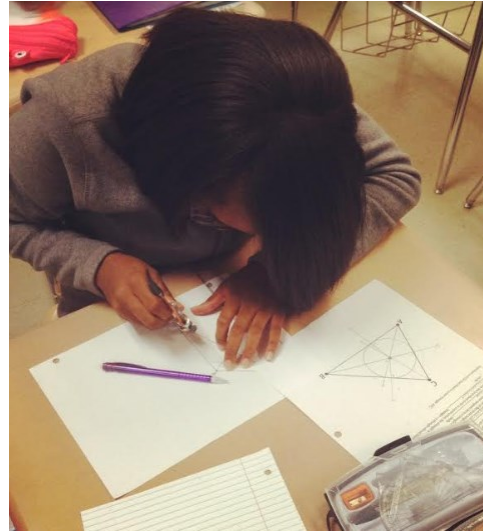


Gifted Classes and AP Offerings

Gifted American Literature
Gifted/Honors Geometry
Gifted 9th Grade Literature
AP Art Studio
Gifted Biology
AP Calculus
AP Chemistry
AP Economics
AP Literature
AP Government/Politics
AP United States History
AP World History
AP World Geography



**Peach County High School
is committed to graduating
college and career ready
students.**

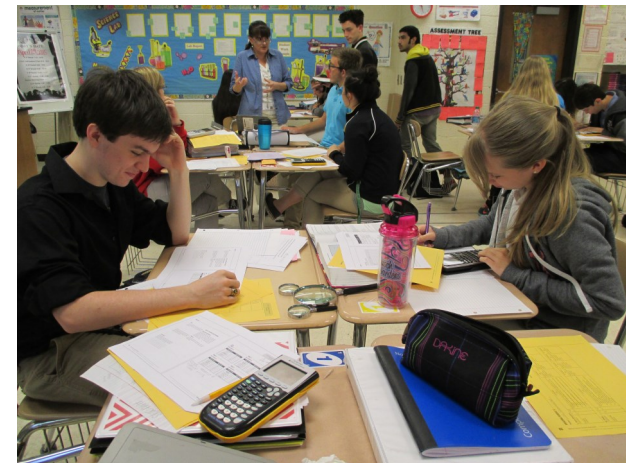


**Mr. Jason Flanders
Gifted Eligibility Chair
Peach County High School
900 Campus Drive
Fort Valley, Georgia 31030**



**PEACH COUNTY
HIGH SCHOOL
GIFTED
EDUCATION**

*Learning Today,
Leading Tomorrow*



Referral Process

In Peach County, students are reviewed for possible referral for gifted education services each year. There are two forms of referrals for gifted eligibility. For the reported referral, "A student is referred for consideration by teachers, counselors, administrators, parents/guardians, peers, self, or others with knowledge of the student's academic abilities. For the automatic referral, students who score at specified levels on nationally norm-referenced tests are referred"

Eligibility

In order to qualify for gifted services in the State of Georgia, a student shall meet eligibility criteria that are consistent with the 160-4-2-.38 Rule and as defined in the GaDOE Resource Manual for Gifted Services. "To be eligible for gifted education services, a student must either (a) score at the 96th percentile (for grades 3-12) on the composite or full scale score of a norm-referenced test of mental ability and meet one of the achievement criteria describe in paragraph (2) (d) 5. (ii) Achievement, or (b) qualifies through a multiple-criteria assessment process by meeting the criteria in any three of the following four areas: mental ability, achievement, creativity, and motivation.

Achieving Excellence in Gifted Education

Peach County Gifted Education

Believing that intelligence plus character is the true goal of education, the mission of Peach County gifted program is to guide individual students to maximize their full, intellectual potential by providing personalized support, authentic assessment, and differentiated learning activities. By empowering them to use their unique gifts and talents, tempering those gifts with knowledge, skills and opportunity, we will enable our students to be responsible and contributing members of a dynamic society.



Peach County High School Gifted Program does not discriminate on the basis of race, color, national origin, sex, age, disability or gender identity in admission to its programs, services, or activities, in access to them, in treatment of individuals, or in any aspect of their operations.

Advanced Content

Advanced Content area courses serve students and high ability learners, who demonstrate exceptional ability and motivation in a particular content area. The local district has criteria and guidelines to identify students in these courses.

Gifted Program Services

The Peach County School District serves gifted students in a variety of direct and indirect services. At the high school level, most students are served through gifted/honors core classes and advanced placement classes. Students participating in these classes are provided with differentiated instruction to help meet their needs.

